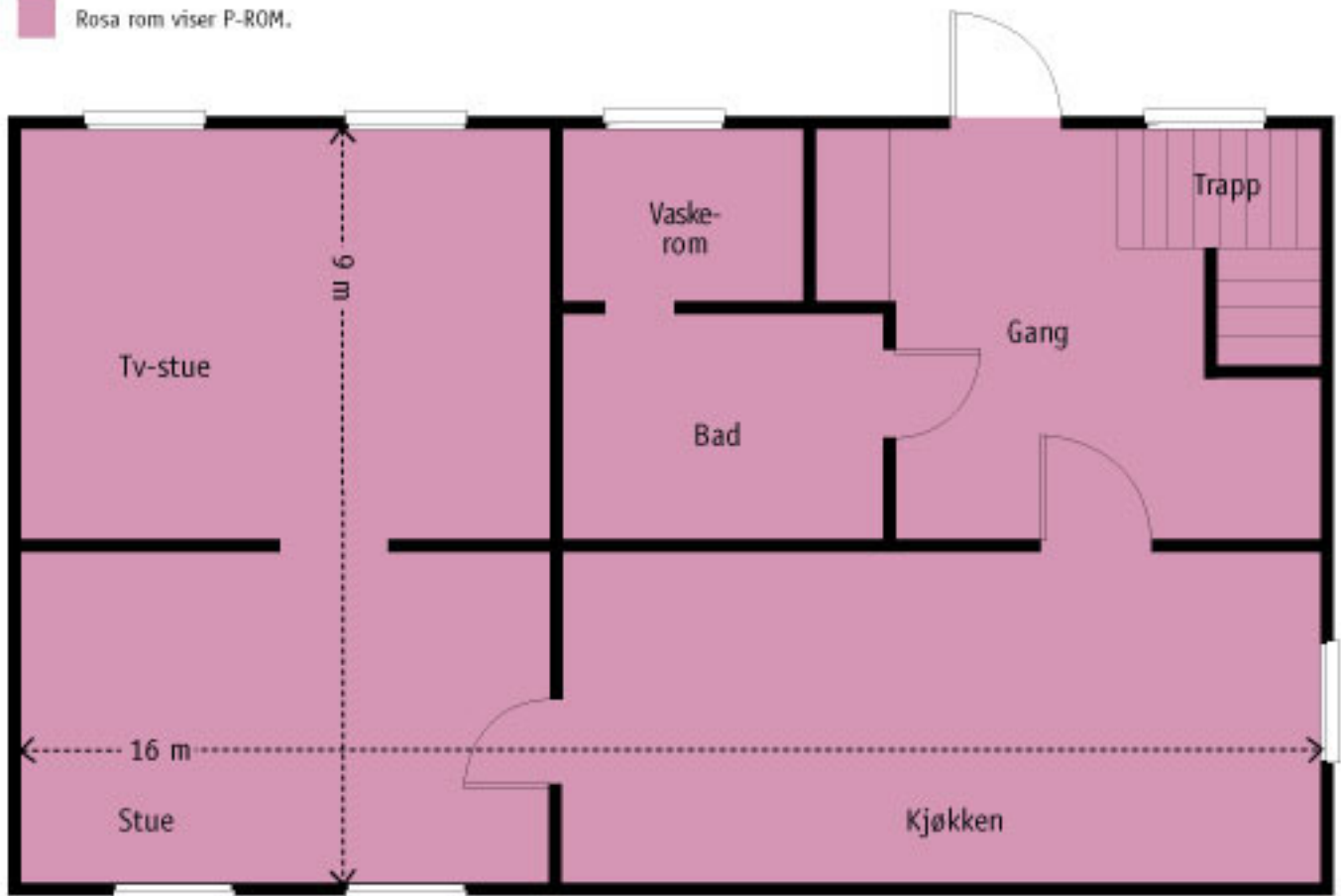


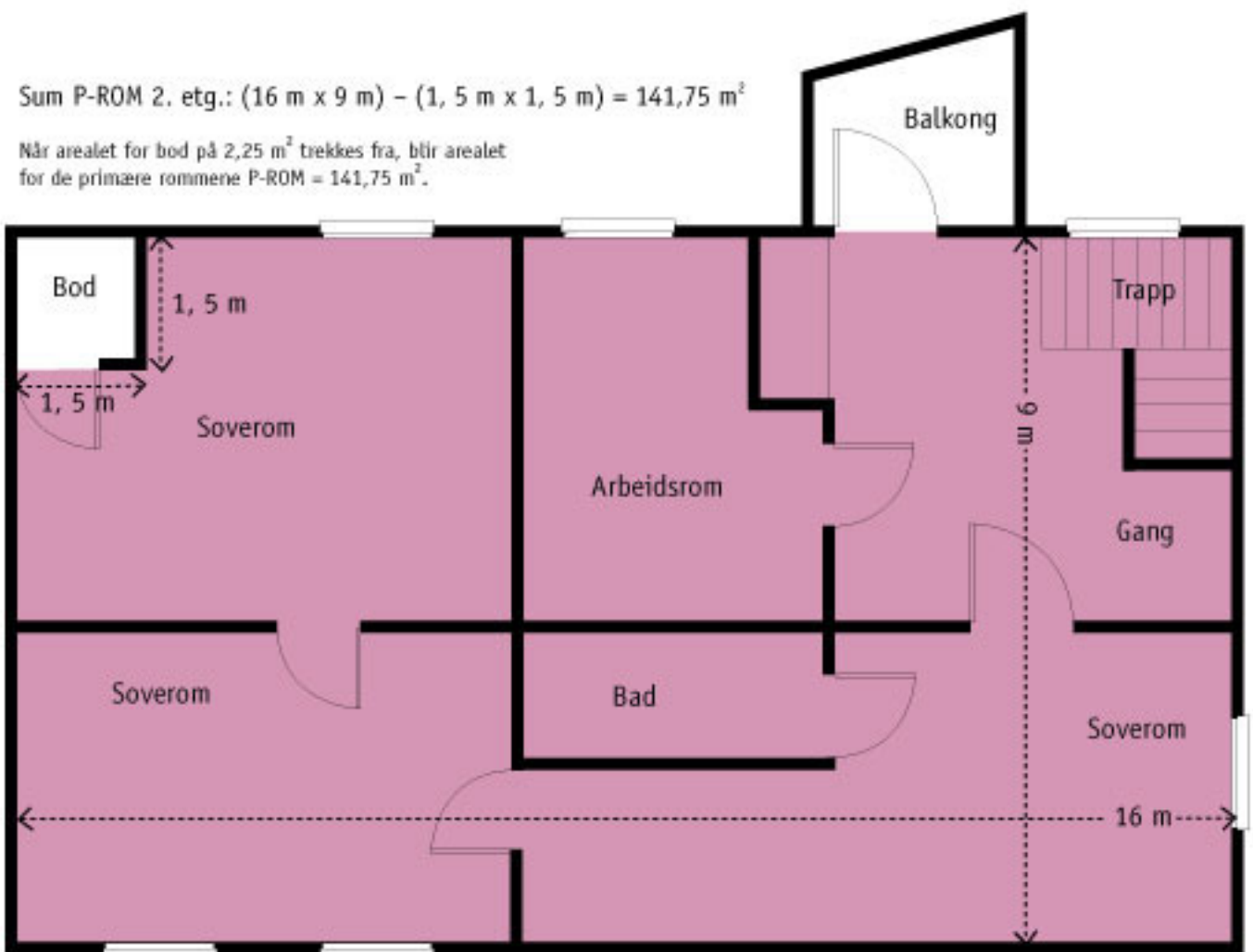
Rosa rom viser P-ROM.



Sum P-ROM 1. etg.  $16 \text{ m} \times 9 \text{ m} = 144 \text{ m}^2$

Sum P-ROM 2. etg.:  $(16 \text{ m} \times 9 \text{ m}) - (1,5 \text{ m} \times 1,5 \text{ m}) = 141,75 \text{ m}^2$

Når arealet for bod på  $2,25 \text{ m}^2$  trekkes fra, blir arealet for de primære rommene P-ROM =  $141,75 \text{ m}^2$ .



Sum P-ROM hele huset:  $144 \text{ m}^2 + 141,75 \text{ m}^2 = 285,75 \text{ m}^2$

Når du rapporterer inn boligopplysningene skal kvadratmetertallet avrundes til hele kvadratmeter, f.eks.:  $285,75 \text{ m}^2 = 285$ . Avrundingen skal gå nedover.